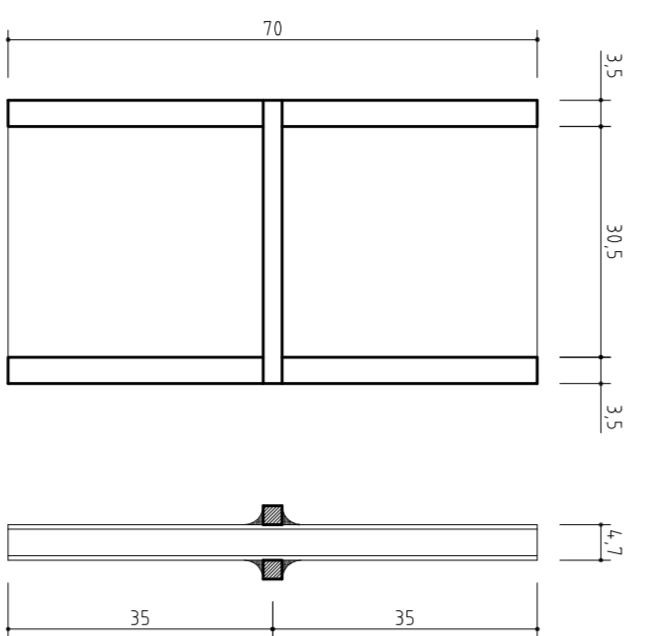
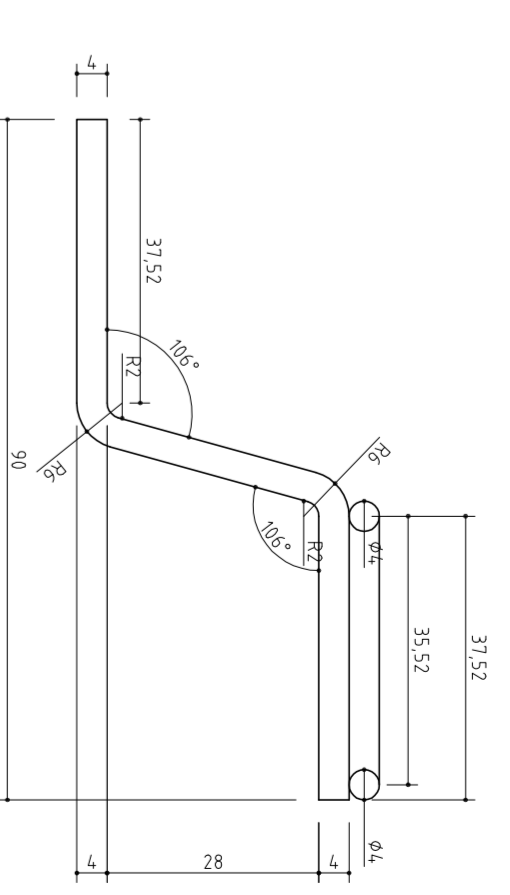
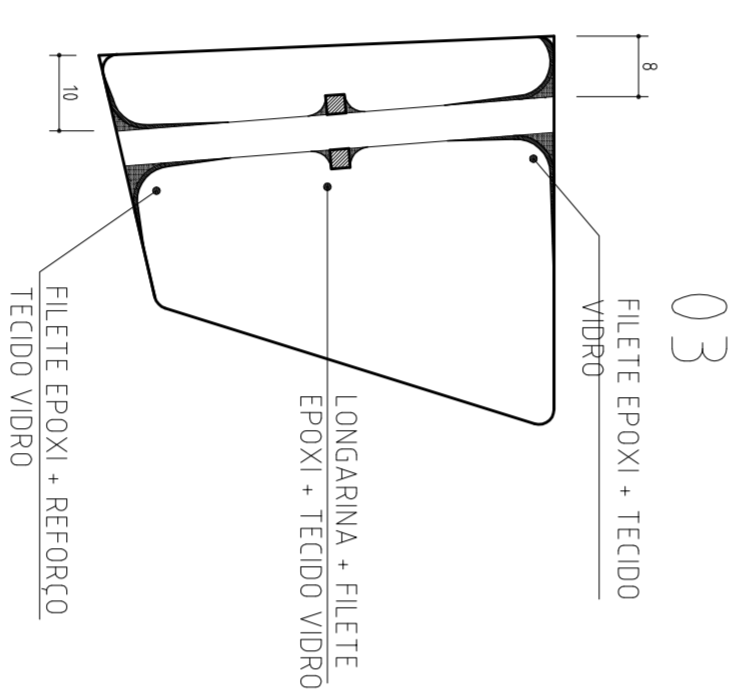


USAR TUBO LIGA T6, DIÂMETRO 100MM, PAREDE 5MM
OBS.: VER DETALHES DESENHO 06

ASSENTOS - TRAPÉZIO LATERAL
USAR TUBOS DE ALUMÍNIO, DIÂMETRO 35MM, PAREDE 3MM



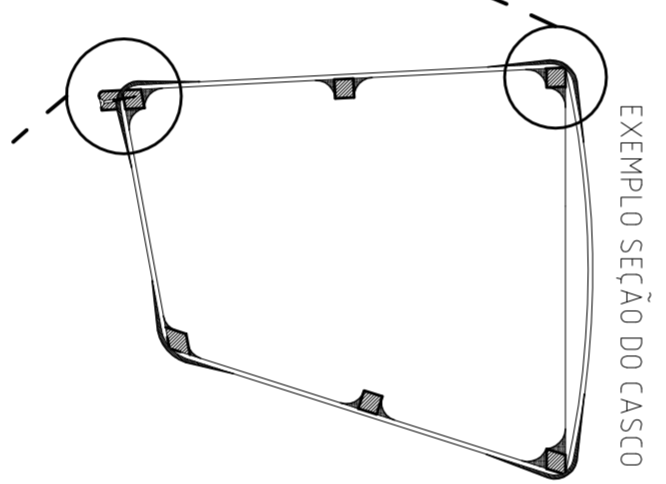
CAIXA DE BOLINA
2 CHAPAS (CNI) 6MM x 70CM x 37.5 CM
1 X LAMINAÇÃO COM TECIDO 360 OU 220 GR/M² DE CADA LADO



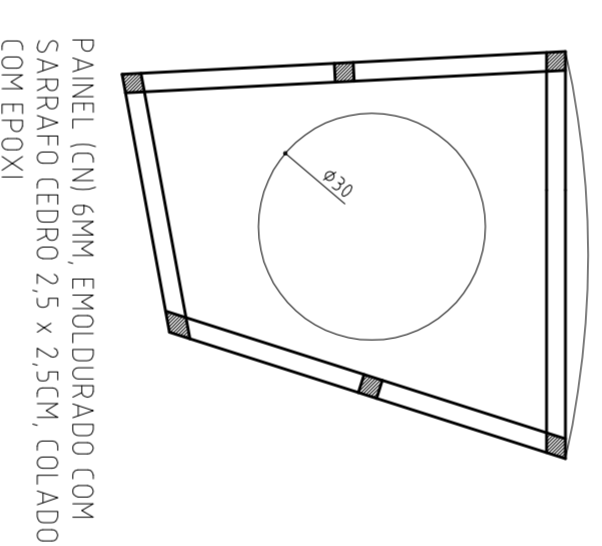
03

04

04

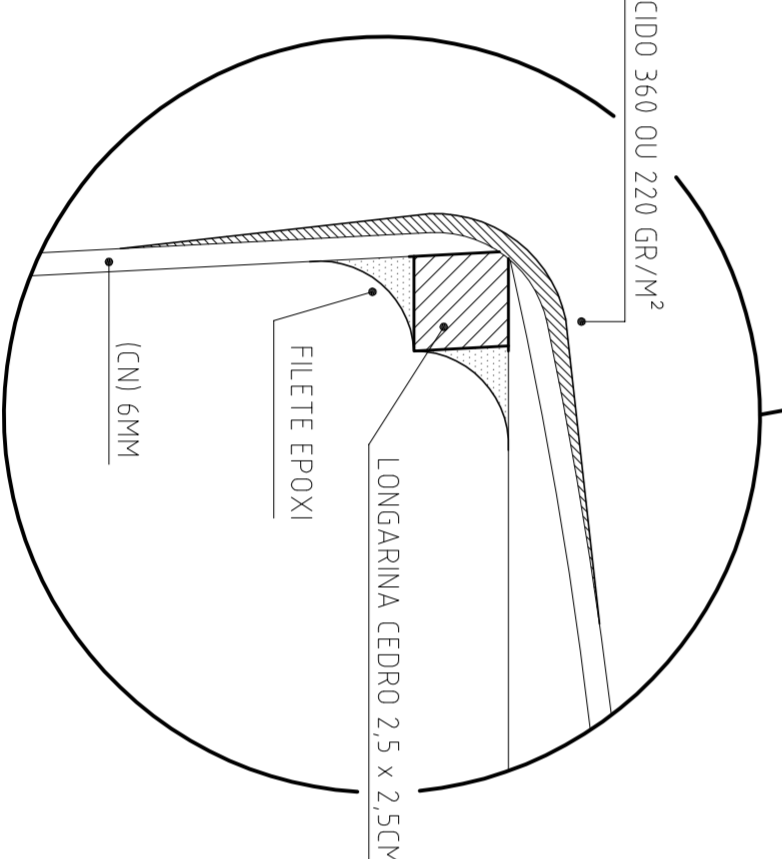


EXEMPLO ANTERPARAS

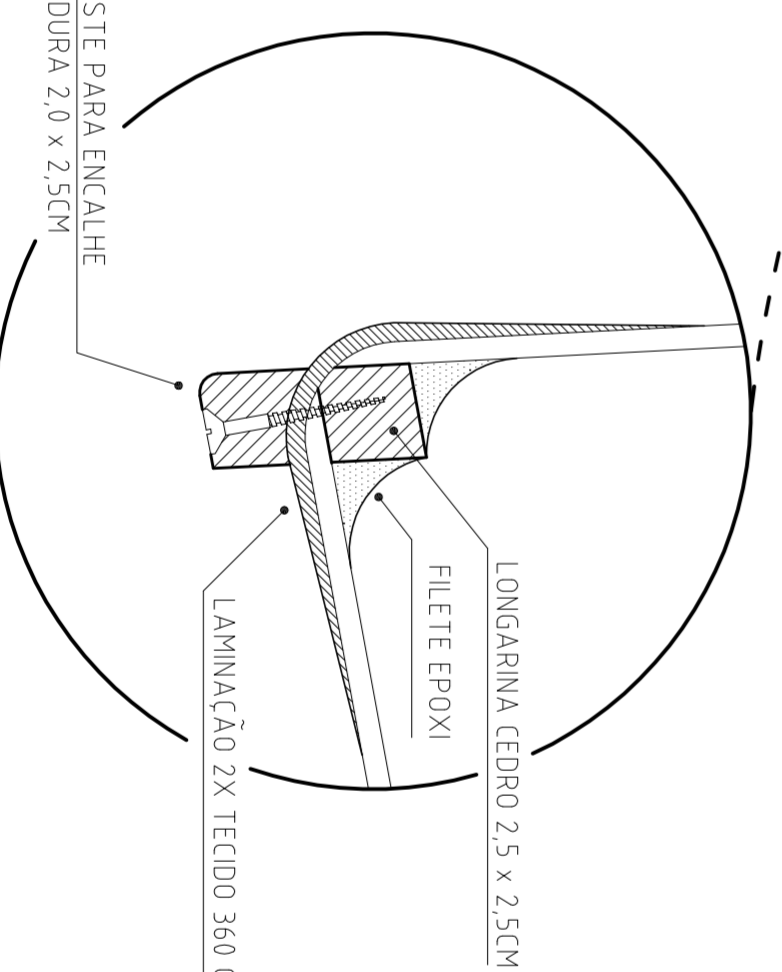


PANEL (CNI) 6MM ENQUILDRADO COM SARRAFO CEDRO 2.5 x 2.5CM, COLADO COM EPOXI

LAMINAÇÃO 2X TECIDO 360 OU 220 GR/M²

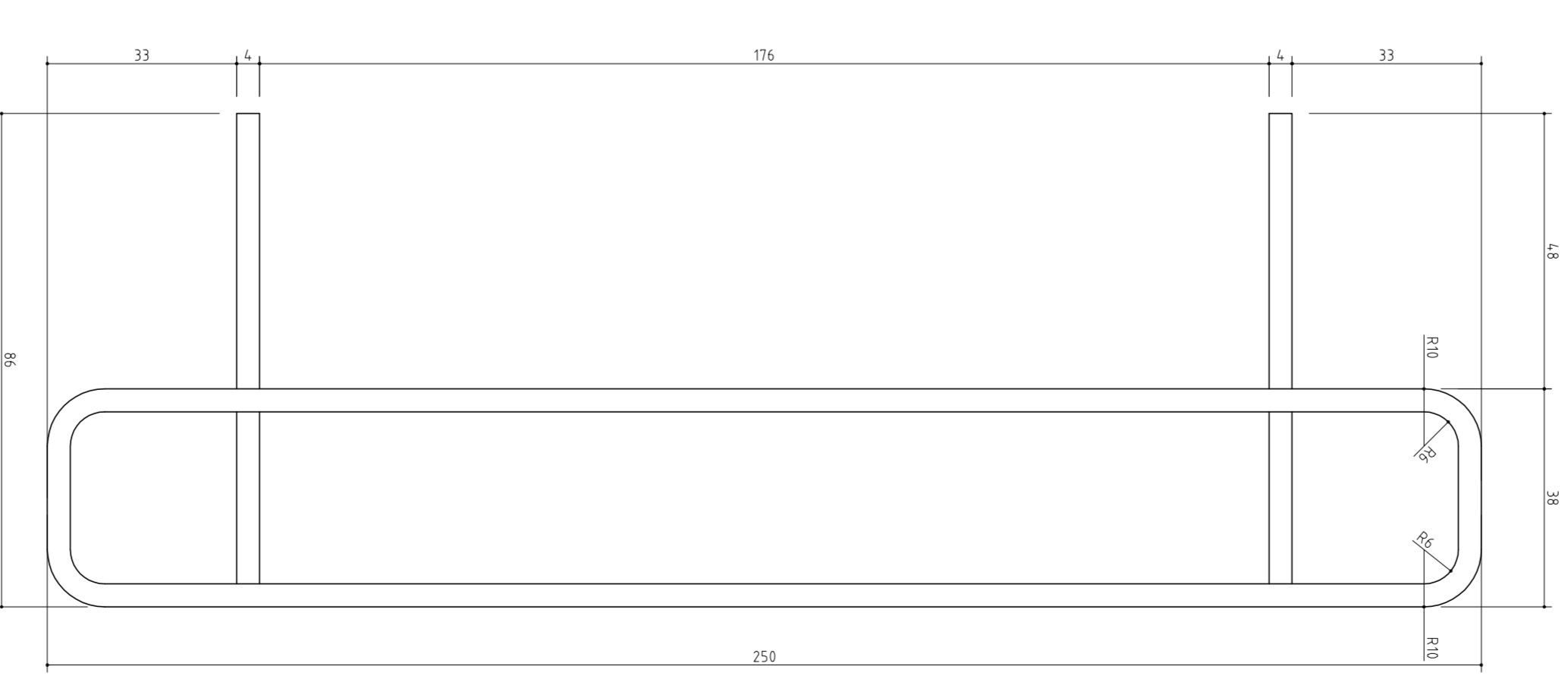


(CNI) COMPENSADO NAVAL

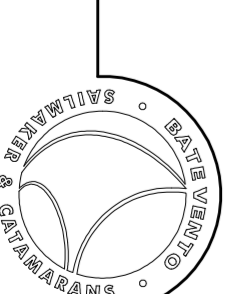


PEÇA DE DESGASTE PARA ENCALHE
USAR MADEIRA DURA 2.0 x 2.5CM

ASSENTOS - TRAPÉZIO LATERAL
USAR TUBOS DE ALUMÍNIO, DIÂMETRO 35MM, PAREDE 3MM



RIVAL 21'



www.datevento.com.br

Projeto: Sérgio Marques

CATAMARÃ 21'

BATEVENTO Data: novembro 2007

Desenho: CHICO ARMOND

Escala: 1:10

Medidas em centímetros Desenho Nº 05